

**POLYGLASS**



# POLYANCHOR<sup>®</sup> UDL 40

Polyanchor UDL 40 is an APP (plastomeric) modified steep slope underlayment constructed with a fiberglass reinforcement. A specialized aggregate is embedded on the walking surface for skid resistance. Utilizing our patented ADESO<sup>®</sup> Dual-Compound Technology, the top layer is APP modified and the bottom surface is a proprietary SBS modified compound. This feature gives the membrane all the benefits of APP plus self-sealing properties around properly installed nails. The sand bottom surface keeps the roll in place for accurate alignment and preparation for nailing after roll-out.



## Applicable Standards

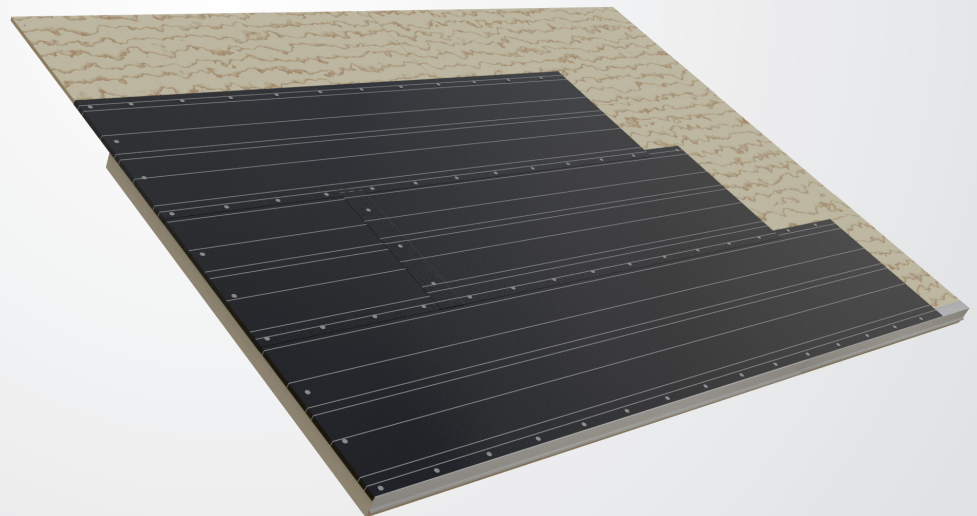
ASTM D4601 Type II  
ASTM D6757  
ASTM D1970

## Typical Applications

- Specially designed for multiple steep slope mechanical applications
- Modified tile underlayment for use in tile lift & relay, re-roof and new construction
- For use under concrete tile, clay tile, shingles and shakes
- Added protection in areas prone to wind driven elements

## Features and Benefits

- Polyglass' industry leading APP (plastomeric) with proven stability in hot, dry climates
- Fiberglass mat for exceptional dimensional stability
- Surface engineered for superior slip resistance and long-term performance
- Confident walkability and tile staging
- Up to 90 day exposure



**polyglass.us**  
**(888) 410-1375**

For more information contact your local Polyglass Sales Representative