

POLYFORZA™ EXTENDED FASCIA

FLASHLESS FASCIA FOR BUR/MODIFIED SYSTEMS

PRODUCT DESCRIPTION

PolyForza Extended Fascia provides your built-up or modified bitumen roof system with the maximum protection against wind up-lift damage that is available in today's roofing market. It will hold up under the toughest weather conditions and is backed by extensive industry testing to bring long-term, worry-free performance. In addition, PolyForza Extended Fascia is designed for fast and easy installation, eliminating the stripping in that is typical of other roof edge designs. The PolyForza Extended Fascia is available in sizes from 8 1/2" to 13" face heights to accommodate multiple nailers and coverage requirements.

FEATURES AND BENEFITS

- Snap-on cover with extruded aluminum bar for secure membrane termination and easy installation.
- Provided in 12'-0" lengths with pre-punched holes for quicker installation and lower labor cost.
- Slotted fastening holes to allow for proper thermal movement of the materials and ensure correct fastener placement and spacing.
- Factory fabricated miters and accessories provide a cleaner appearance and eliminates field fabrication, providing time and labor savings.
- Additional accessories included are:
 - Extruded Anchor Bar
 - Anchor bar splice plates
 - All required fasteners
- Radius is available to meet the unique needs of each project.

APPLICATION INSTRUCTIONS

See PolyForza Extended Fascia Installation Instructions.

MANUFACTURING FACILITIES

- Fernley, NV
- Hazleton, PA
- Phoenix, AZ
- Waco, TX
- Winter Haven, FL

CORPORATE HEADQUARTERS

Polyglass U.S.A., Inc.
1111 West Newport Center Drive
Deerfield Beach, FL 33442
www.polyglass.us

General Line: (888) 410-1375
(954) 233-1330

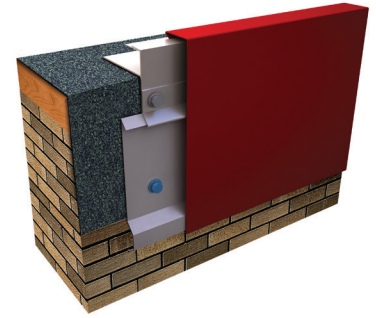
Customer Service: (800) 222-9782
Technical Service: (866) 794-9659

Questions? technical@polyglass.com

Product Disclaimer: Unless otherwise incorporated into or part of a supplemental manufacturer's warranty, Polyglass warrants its product(s) against manufacturing defects that result in the material not complying with product specifications for a period of 1 year.

All data furnished refers to standard production and is given in good faith within the applicable manufacturing and testing tolerances.

Polyglass U.S.A., Inc., reserves the right to improve and change its products at any time without prior notice. Polyglass U.S.A., Inc. cannot be held responsible for the use of its products under conditions beyond its own control. For most current product data and warranty information, visit www.polyglass.us



PRODUCT DATA

Materials

- 22 ga. steel
- 0.050" aluminum
- 0.063" aluminum

Extended Sizes

- 8.5"
- 10"
- 11.5"
- 13"

APPLICABLE STANDARDS

- ANSI/SPRI/FM 4435/ES-1 Standard
- FM Approved
- Miami-Dade County Approved



AVAILABLE COLORS

Choose from over 30 colors and finishes, see color chart for color options.



www.polyglass.us